



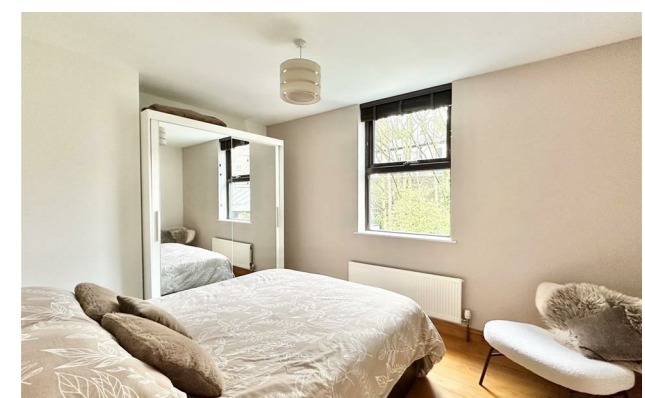
SOLD
jordan fishwick
0161 275 1111

jordan fishwick

Hollinwood Road Disley Stockport

Hollinwood Road Disley Stockport SK12 2EB

£295,000



The Property

Stunning condition, convenient location and spacious, versatile accommodation. Occupying a superb position close to the centre of Disley Village and all its amenities, a truly deceptive, brick-built, mid terraced property. Arranged over four floors to include: entrance hall, open plan living/dining room, lower ground floor kitchen with French doors, two first floor bedroom with a contemporary bathroom and a second floor attic bedroom. Double glazing, gas central heating, rear garden area with potential for off road parking. A great home and suitable for many types of buyers!



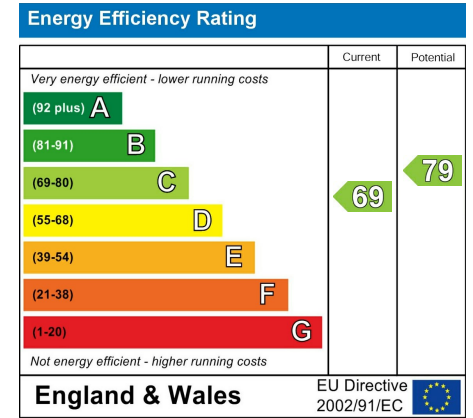
- Superbly Presented
- Convenient Position
- Ideal For Disley Village
- Three Bedrooms
- Arranged Over Four Floors
- Potential Parking and Garden
- Gas Central Heating and Double Glazing
- Open Plan Living/Dining Room
- Fitted Kitchen and Contemporary Bathroom

Postcode SK12 2EB

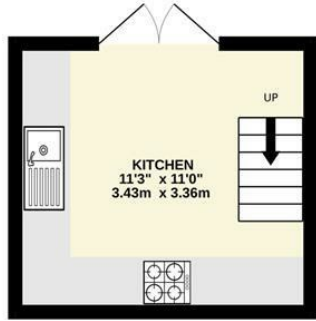
EPC Rating C

Local Authority Cheshire East

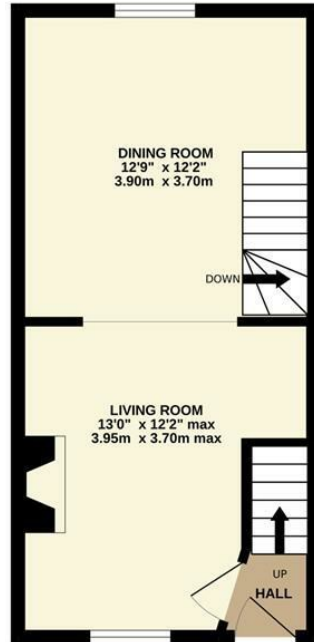
Council Tax B



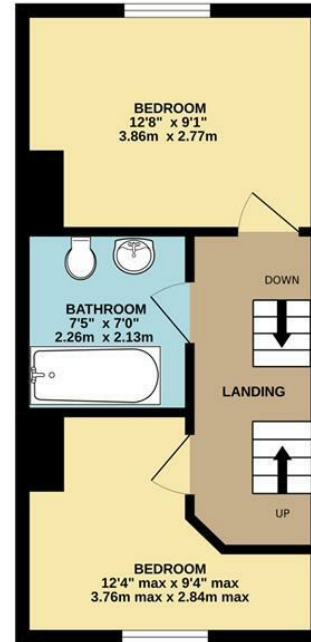
BASEMENT



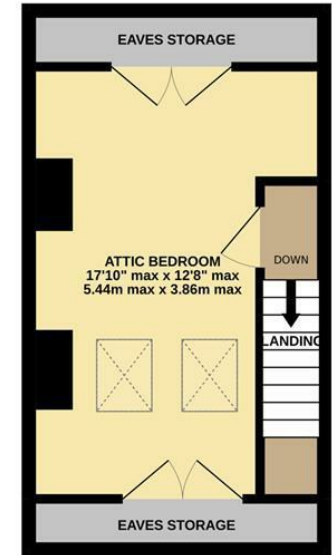
GROUND FLOOR



1ST FLOOR



2ND FLOOR



Whilst every attempt has been made to ensure the accuracy of the floorplan contained here, measurements of doors, windows, rooms and any other items are approximate and no responsibility is taken for any error, omission or mis-statement. This plan is for illustrative purposes only and should be used as such by any prospective purchaser. The services, systems and appliances shown have not been tested and no guarantee as to their operability or efficiency can be given.
Made with Metropix ©2022



These particulars are believed to be accurate but they are not guaranteed and do not form a contract. Neither Jordan Fishwick nor the vendor or lessor accept any responsibility in respect of these particulars, which are not intended to be statements or representations of fact and any intending purchaser or lessee must satisfy himself by inspection or otherwise as to the correctness of each of the statements contained in these particulars. Any floorplans on this brochure are for illustrative purposes only and are not necessarily to scale.

Offices at: Chorlton, Didsbury, Disley, Hale, Glossop, Macclesfield, Manchester Deansgate, Manchester Whitworth Street, New Mills, Sale, Wilmslow and Withington

14 Market St, Disley, Cheshire, Stockport SK12 2AA

01663 767878

disley@jordanfishwick.co.uk

www.jordanfishwick.co.uk